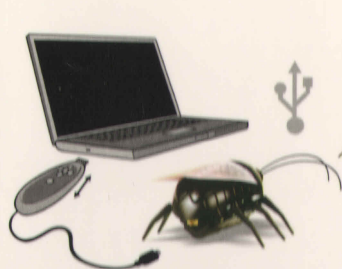




R/C Beetle Fluorescent

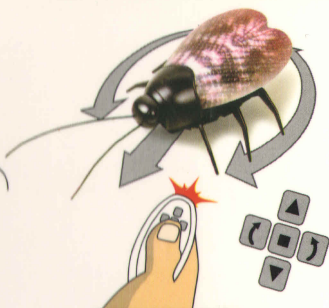
MINI-ROBOT

FUNCTION:



1 CHARGE

- Turn off **Beetle Fluorescent**.
- Extend USB connector.
- Plug controller wire into **Beetle Fluorescent**.
- Plug USB connector into USB port.
- **Beetle Fluorescent** is recharged when controller light turns off.



2 PLAY

- Retract USB connector.
- Turn on **Beetle Fluorescent**.
- Aim controller at **Beetle Fluorescent**.
- Push buttons to control forward, backward, turn left, turn right, stop.
- Remembers last command.

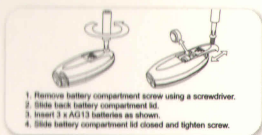


3 Light function

It will automatically light when turn on the switch of beetles

Small parts warning: Choking hazard- small parts.
Not for children younger than 3 years.

Keep packaging for reference as it contains important information



Battery Warning

- non-rechargeable batteries are not to be recharged.
- different types of batteries or new and used batteries are not to be mixed.
- batteries are to be inserted with the correct polarity.
- exhausted batteries are to be removed from the controller.
- the supply terminals are not to be short-circuited.
- recharge only under adult supervision.
- do not use rechargeable batteries.

! WARNING:

CHOKING HAZARD-Small parts.
Not for children under 3 years.

Made in China