

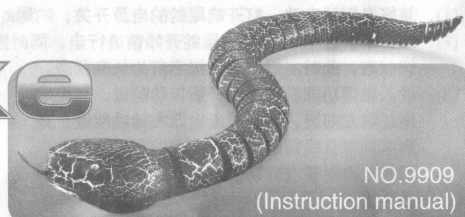
(Please read through this manual before use)

rattle snake

Infrared Remote Control Series

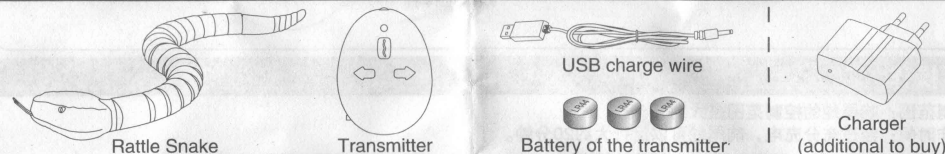
FULL FUNCTION:

MOVE FORWARD, TURN LEFT AND RIGHT, STOP,
RETRACTABLE TONGUE, SWINGING TAIL.



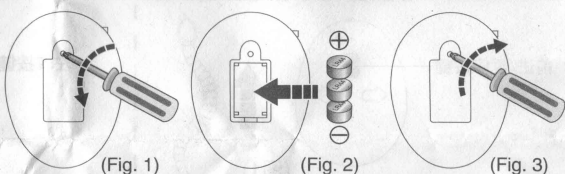
NO.9909
(Instruction manual)

1. Component parts



2. Transmitter Batteries Installation

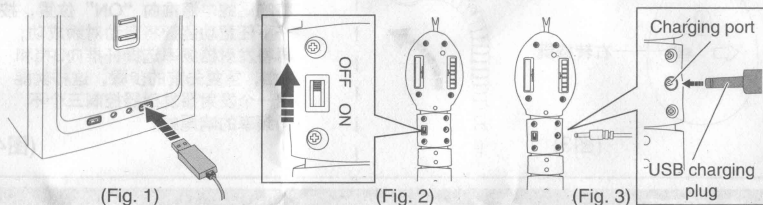
- (1). Use the crossing screwdriver to unscrew at the back of the transmitter in anticlockwise direction, open the battery cover. (Fig. 1)
- (2). Place 3 pcs of LR44 button batteries according to the polarity properly. (Fig. 2)
- (3). Close the battery cover, use crossing screwdriver to screw it in clockwise direction. (Fig. 3)



3. Charge

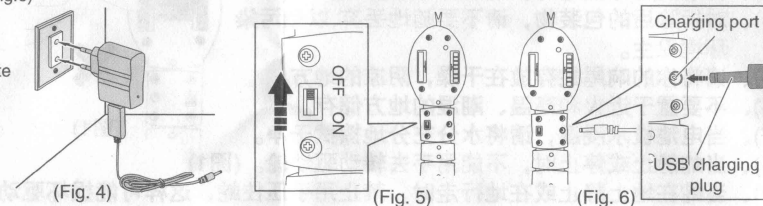
- (1). Being charged by computer

- ①. Insert the USB port into the USB socket of the computer with the indicator light of the USB is off. (Fig. 1)
- ②. Turn off the switch on the bottom of the rattle snake (Fig. 2). Connect the USB charging plug to the charging port on the bottom of the rattle snake (Fig. 3) with indicator keeps eternal flashing on the USB port. The charging will complete in 30 minutes while the indicator will be off.



- (2). Being charged by charger

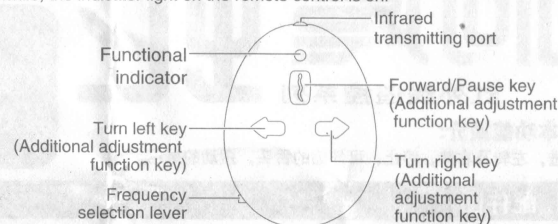
- ①. Connect the USB port with the USB charger, insert the charger to the power socket, the indicator light of the charger is on and the indicator light of the USB is off (Fig. 4)
- ②. Turn off the switch on the bottom of the rattle snake (Fig. 5). Connect the USB charging plug to the charging port on the bottom of the rattle snake (Fig. 6) with indicator keeps eternal flashing on the USB port. The charging will complete in 30 minutes while the indicator will be off.



4. Adjustment

When the snake does not move straight, you may adjust it by controller, following the steps below:

- (1). Place the batteries into remote control properly. Switch on the snake body, the indicator light on the remote control is flashing slowly simultaneously.
- (2). Press the forward button to let the snake move. At this time, press the left and right button simultaneously for 3 seconds to access the left and right adjustment state. Meanwhile, the indicator light on the remote control is on.
- (3). Under the adjustment state, the snake moves automatically. If the snake deviates to the right when forwarding, press the left button until the snake moves straight, if the snake deviates to the left when forwarding, press the right button until the snake moves straight.
- (4). After finishing adjustment, press the forward button for 3 seconds, the indicator light on the remote control restores to standby mode and you can continue to play normally.



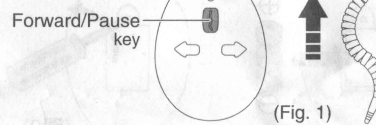
5. Operation

Control Distance: Within 15 meters.

Operation time : After fully charged, rattle snake can run for 20 minutes.

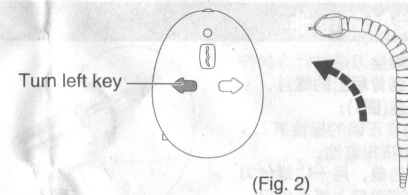
- (1). Forward/Pause:

Press the Forward/Pause key to make the rattle snake move forward; then press the Forward/Pause key once again and the rattle snake will stop moving. (Fig. 1)



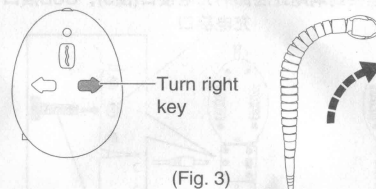
- (2). Turn left:

Press the turn left key on the transmitter. (Fig. 2)



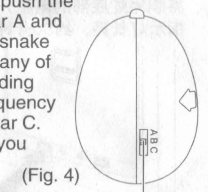
- (3). Turn right:

Press the turn right key on the transmitter. (Fig. 3)



- (4). Frequency selection lever (Fig. 4):

You can use the frequency selection lever to control the rattle snake with 3 different frequencies. In other word, you may use 3 transmitters in different frequencies to control 3 rattle snakes to compete. Firstly push the frequency selection lever to gear A and then pull the power of the rattle snake to "ON" position, press down any of the functional key to finish decoding successfully; Then push the frequency selection lever to gear B and gear C. Repeat the previous steps and you can use only one transmitter to control this rattle snake in 3 different frequencies.



6. CAUTION

- (1). Detachable small parts should be put away, do not let children devour.
- (2). If there is radio interference to the operation venue, please select the other venue to operate.
- (3). When the remote control is in low battery, please stop operating immediately.
- (4). Please dispose the packing material properly to prevent pollution.
- (5). Please keep this toy in dry and cool place.
- (6). Please do not keep it near the fire, high temperature and moist place.
- (7). If the battery is wet, please make sure it is fully dry before using.
- (8). When the snake is static or stop, please do not use your hand to turn the wheel below the snake (Fig. 1).
- (9). When the snake is static or moving, do not use hand to press the snake otherwise you will damage the wheels (Fig. 2).

