



6 CHANNEL RADIO CONTROL SYSTEM

INSTRUCTION MANUAL

Edited by D. Bacon y11m06d30a for:
1. Better understanding in English.
2. Mode 2 operation



MODEL:FS-CT6A

Digital proportional radio control system

[Http: www. flyskychina. com](http://www.flyskychina.com)
Copy right 2007@flysky co. , ltd

Menu

1. Introduction	2
2. Support	2
3. Warnings	3
4. Safety	3
5. Charging	4
6. Transmitter parameters.	5
7. Receiver parameters.	5
8. Transmitter layout	6
9. Receiver and servo connections	7
10. Operation Notes	8
10. 01 Matching ("binding")	8
10. 02 Turn on	8
10. 03 Turn off	9
11. Computer hardware connection	10
12. Computer software installation.	11
13. Transmitter function notes (Heli)	12
13. 01 System function options.	12
13. 02 System function settings.	13
13. 03 Switches and potentiometer settings	15
14. Transmitter function notes (Plane)	16
14. 01 System function options.	16
14. 02 System function settings.	17
14. 03 Switches and potentiometer settings	18
15. Terms, English/Chinese	19
16. Package contents.	20

1.Introduction

Thank you




2.Services

If you found any problems during operation, please refer to the manual.
If the problem still exist, you could contact our dealers.
And you could also log on to our website service center:

HTTP: // WWW. FLYSKYCHINA. COM

3. Warnings

Please pay attention to the following symbols:

-  **Danger:** If the operator does not operate by following the instructions, the operator may lead to serious injuries, even Mortal danger.
-  **Warning:** If the operator does not operate by following the instructions, the operator may lead to serious injuries, even Mortal danger.
-  **Attention:** If the operator does not operate by following the instructions, the operator may lead to minor injuries, but generally it will not cause serious injuries to the operator.



Prohibition



Mandatory

4. Safty guides



Do not fly in bad weather such as rain or thunder



Before you fly, please make sure the movement of servos are correct.



Set throttle and throttle trim to lowest position before turning on the receiver. Flashing transmitter LED indicates low battery, do not fly.



Shut off receiver before shutting off the transmitter. Otherwise uncontrolled operation may result!

5. Charging



Do not fly with a low battery.

A charging port is installed on the transmitter, for use with a NiCD or NiMH battery. If using LiPo batteries, charge with the balance connector on the battery, and DO NOT use the built-in charging port.

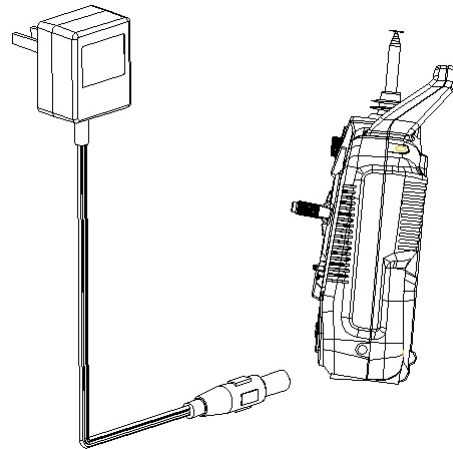


Use the proper charger for the batteries installed.

Remove batteries for storage, as leakage will ruin the transmitter.

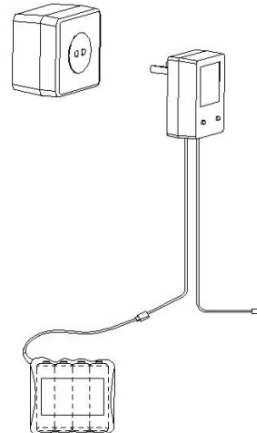
Transmitter charger:

1. Install batteries with correct polarity, and install the cover.
2. Connect the charger to AC power.
3. Connect the charger to the transmitter Connector.
4. Cut off the power supply immediately after Recharge completed.



Receiver charger:

1. Connect the charger to AC power.
2. Connect the receiver with battery charger
3. Recharge completed, cut off the power supply immediately.



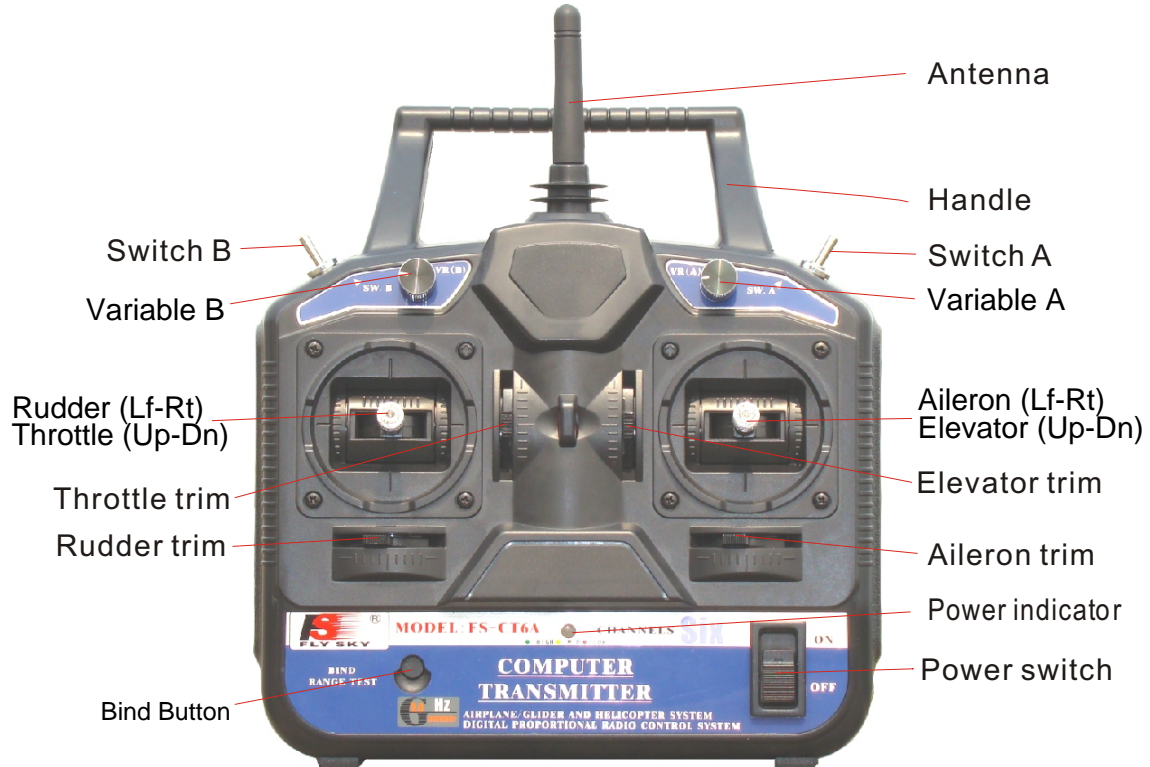
6. Transmitter parameters

- *Channels: 6
- *Charger port: Yes
- *Frequency band: 2.4GHz
- *Simulator port: PS-2
- *Power resource: 1.5V*8 "AA" Battery
- *Program type: GFSK
- *Modulation type: FM
- *RF power: 19db
- *Static current: $\leq 250\text{mA}$
- *Voltage display type: LED
- *Size: 189*97*218mm
- *Weight: 575g
- *Color: black
- *Antenna length: 26mm
- *Heli-140/Heli-120/Heli-90/Acro
- *Sub Trim: Yes
- *Thro Cuv: Programmable
- *Pitch Cuv: Programmable (Pitch curve)
- *Support multiple user model
- *Support trim movement
- *Support rudder angle overturned (Sorry, this is too strange to even guess about - DBacon)
- *Support rudder angle adjustment
- *Support both hand software adjustment (Mode setup)
- *Support swashplate adjustment
- *Support programmable channel output

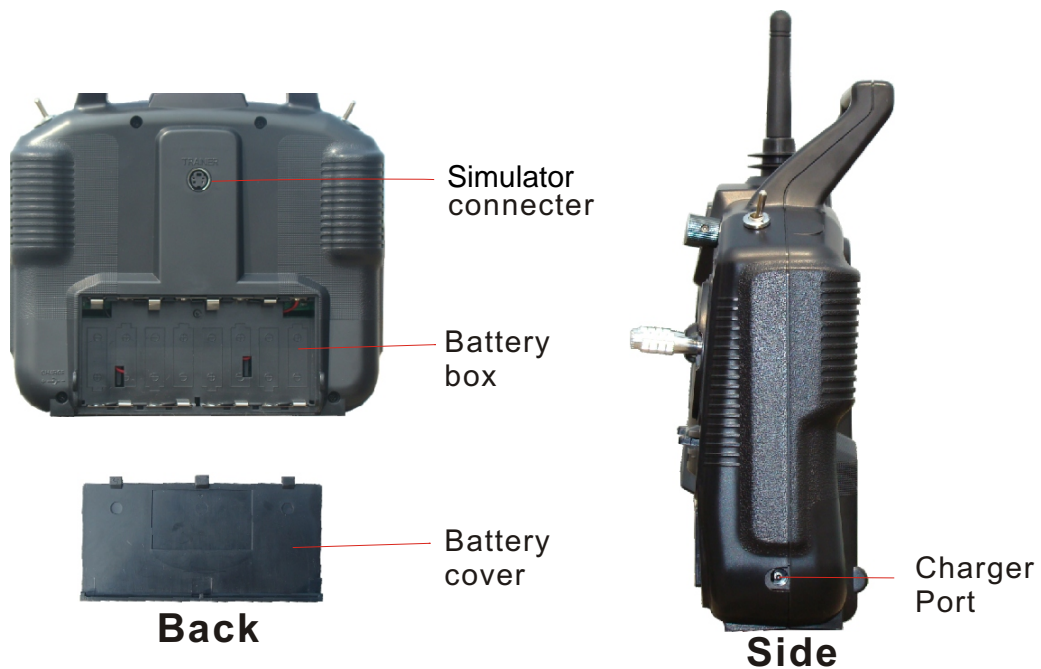
7. Receiver parameters

- *Channels: 6
- *Frequency band: 2.4GHz
- *Power resource: 1.5V*4 "AA" Battery
- *Program type: GFSK
- *Modulation type: FM
- *RF Receiver sensitivity: -76db
- *Static current: $\leq 85\text{mA}$
- *Size: 45*23*13.5mm
- *Size: 25*16.8*6.5mm
- *Weight: 12g
- *Color: Gray semi-transparent
- *Antenna length: 26mm

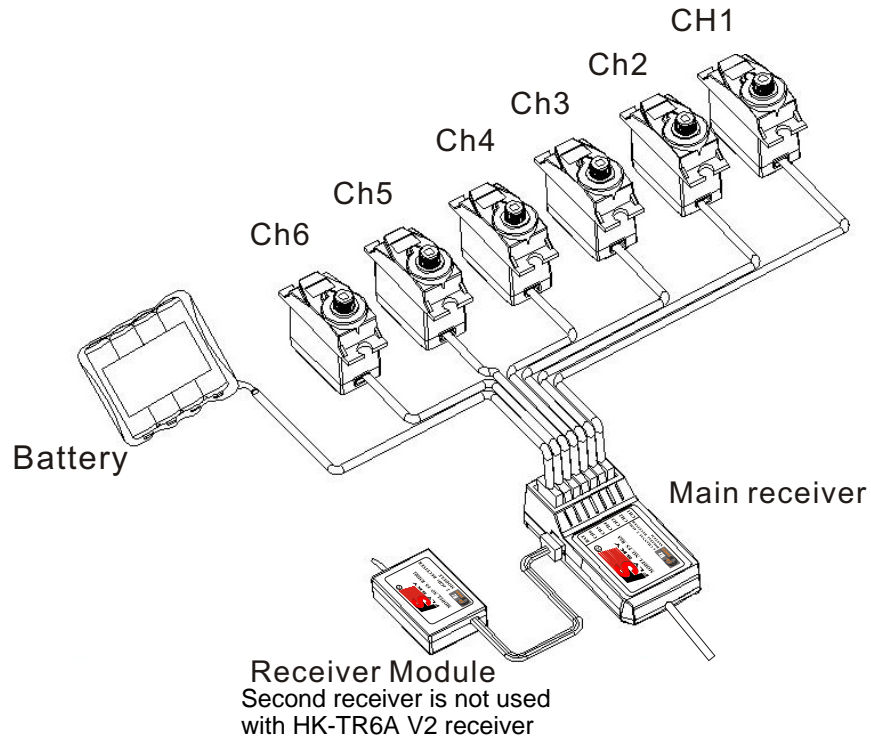
8. Transmitter Layout MODE 2



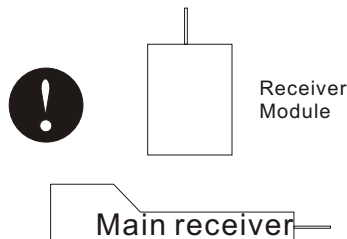
Front



9. Receiver and servo connections



When installing the receiver please make sure that the two antennas are oriented at 90 degrees to each other



10. Operation notes

The spread spectrum operation with automatic addressing insures immunity to interference.

10.01 Matching (bind)

The receiver is already matched to the transmitter. To change this:

1. Install the battery to 2.4G transmitter and turn it off.
2. Insert the BIND plug in the ch 6 position on the receiver.
3. Connect the receiver battery to any port, and turn on the receiver.
Flashing LED on the receiver means that it is in matching mode.
4. Press and hold the button on the transmitter, and then switch on the transmitter.
5. When the receiver LED stops flashing (about 10 seconds) matching is done.
6. Release the match button on the transmitter, take out the match line.
7. If the test fails, please repeat the action above.
8. If the test succeeds, then insert the power connector into BAT, match complete.
9. Turn off the receiver and install servo for ch 6, if used.

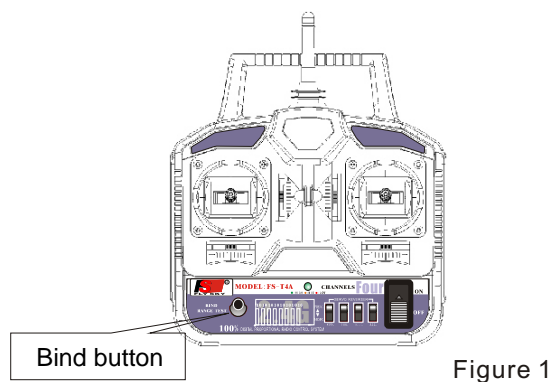
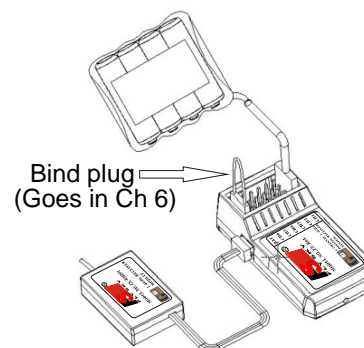


Figure 1



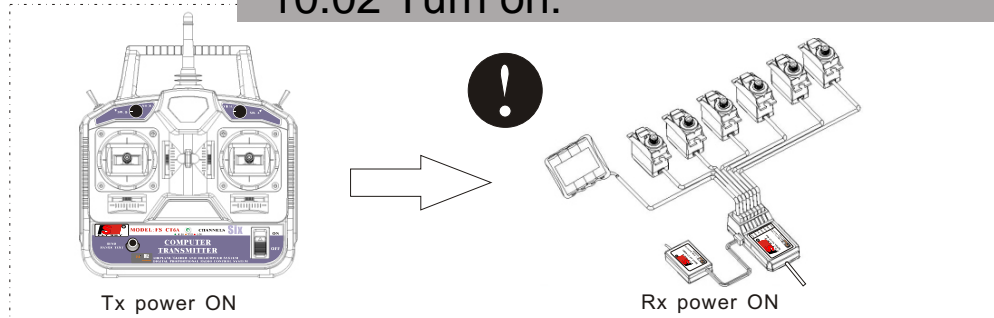
Second receiver is only on some models, not HK-TR6A V2

10.02 start up

1. Turn on transmitter
2. Turn on receiver
3. LED comes on steady

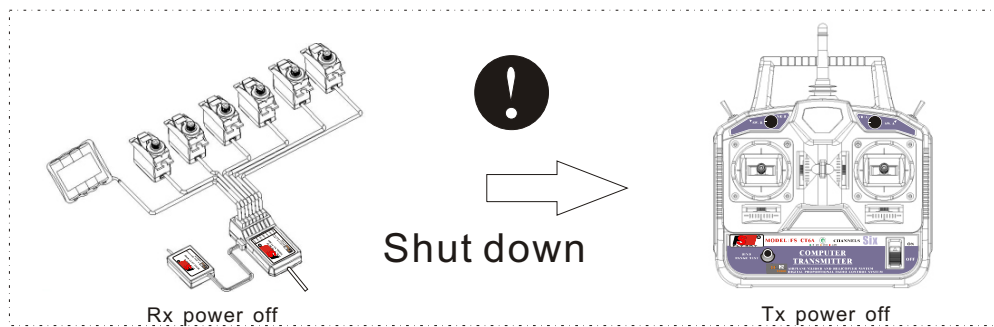
2. 4G 6 Channel remote system

10.02 Turn on:



10.03 Turn off:

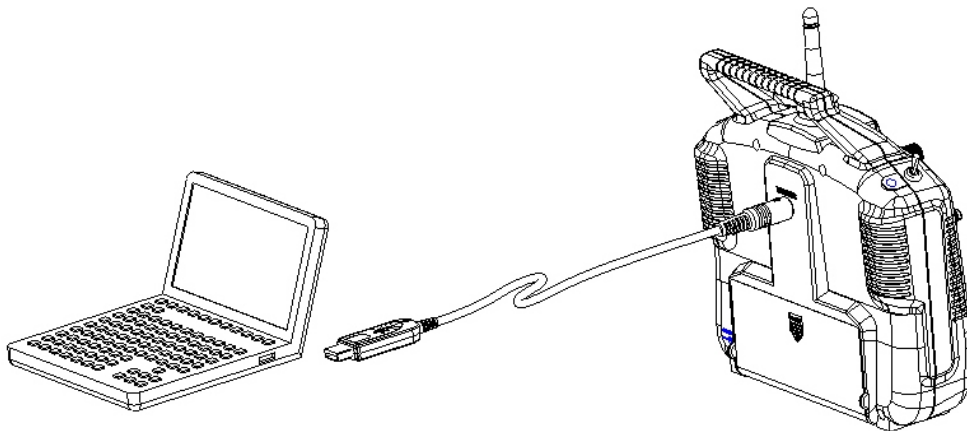
1. Cut off the receiver power supply.
2. Cut off the transmitter power supply.



11. Computer hardware connection

How to program:

1. Install the battery to the transmitter and switch on the power.
2. Plug in the programming line to the transmitter port.
3. Plug in the programming line to computer.
4. Launch the software program T6CONFIG.EXE.
5. Click on setting button, select programming port.
6. Click on GETUSER button, import the transmitter data to pc.
7. Apply programmable settings on the existing parameters.



12. Computer software installation

12. 01 PC software download:

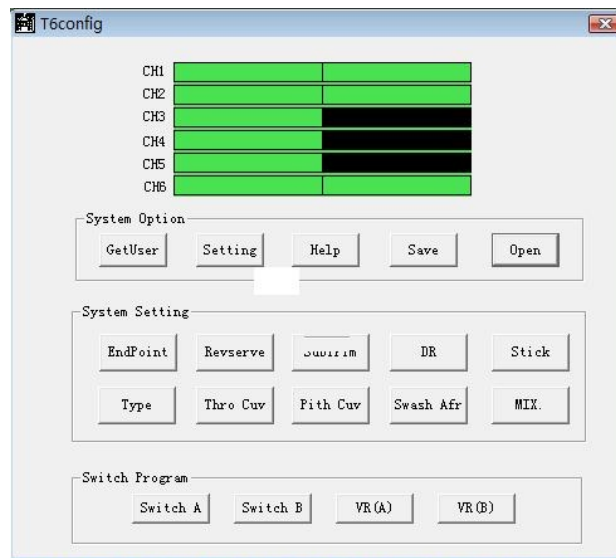
You can download from our website : WWW.FLYSKYCHINA.COM

12. 02 PC software installation:

1. Install driver software: FS-CT6DRIVER001. EXE
2. Install application software: FS-CT6SOFTWARE. EXE
3. Restart computer
4. Installation completed.

12. 03 PC software application:

1. Install the battery to the transmitter and switch on the power.
2. Connect the transmitter, programming line and pc.
3. Left double-click the application icon and see the following screen.

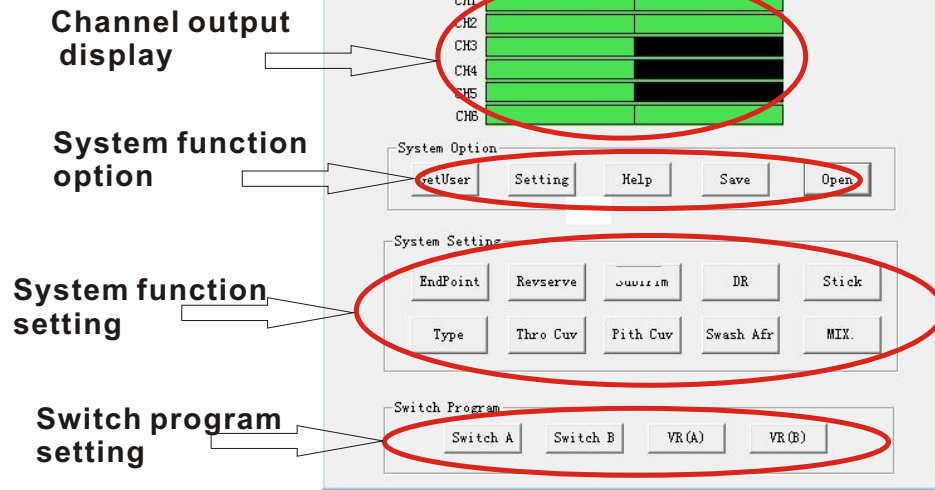


Application interface

13. Transmitter function notes (Heli)

Connect the transmitter programming line with pc, switch on the transmitter and application software. If you choose these types of heli (HELI90、HELI120、HELI140) the following interface will appear:

Use "TYPE" function to
Select plane or heli.
See page 14, bottom.



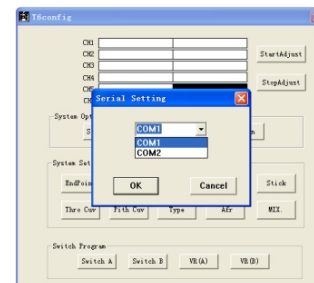
13. 01 System function option:

GETUSER: Import the transmitter data to pc.

When programming, please use GETUSER button to transfer the data to PC this prevent the data overwrite.

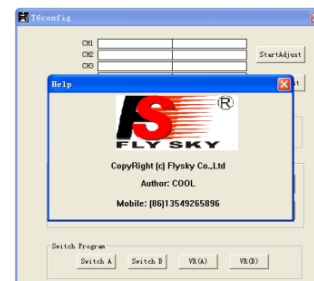
Left click the 'SETTING' button, the screen on the right will appear, select the proper USB port.

Press 'ok' button when done.



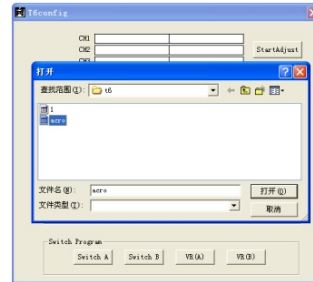
Left click the 'HELP' button for assistance.

Note, this was not functional for me -DBacon.



2. 4G 6 Channel remote system

Left click the 'SAVE' button on the interface, the screen on the right will appear, this allows multiple files for models.
You can give it a name, and left click the 'save' button to save.



Left click the 'OPEN' button on the main interface, the screen on the right will appear, this system function is for the parameters setting.

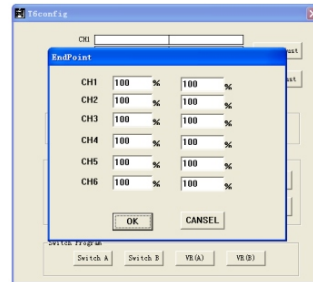
Left click the 'save' button after select finished.



13. 02 System function settings

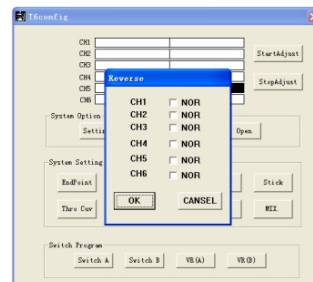
Left click the 'ENDPOINT' button on the interface, the screen on the right will appear, this is for setting the limits of travel for each servo.

Left click the 'ok' button to finish the adjustment.
Left click the 'cancel' button to restore.



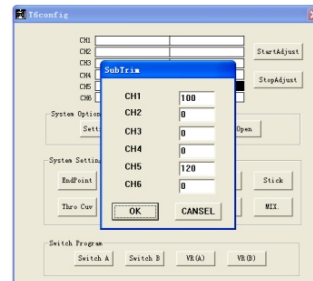
Left click the 'REVERSE' button on the interface, the screen on the right will appear, this function is used to reverse a servo.

Left click the channel you want to change.
Click 'ok' button to finish the adjustment.



Left click the 'SUBTRIM' button on the interface, the screen on the right will appear, this function is used to trim a single servo.

Click 'ok' button to finish the adjustment.

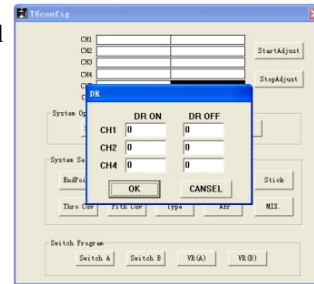


2. 4G 6 Channel remote system

Left click the 'DR' button on the interface, the screen on the right will appear, this function is used to adjust Dual Rates for CH 1, 2 & 4

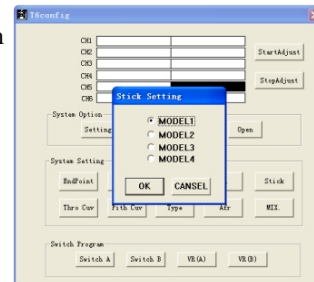
This function will only take effect when the 'DR' button is switch on.

Click 'ok' button to finish the adjustment.



Left click the 'STICK SETTING' button on the interface, the screen on the right will appear, Use this to select mode. Mode 2 is most popular in the US.

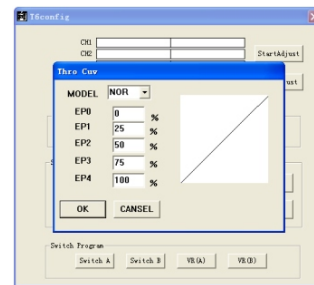
Click 'ok' button to finish the adjustment.



Left click the 'THRO CUV' button on the interface, the screen on the right will appear, this function is use for the adjustment of engine throttle curve

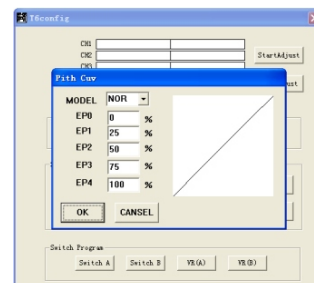
There are two states, NOR(mal) and IDEL (stunt). Each curve is made of 5 points.

Click 'ok' button to finish the adjustment.



Left click the 'PITH CUV' button on the interface, the screen on the right will appear, this function is use for the adjustment of the helicopter PITCH curve, and has two states also.

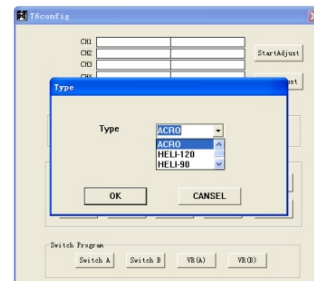
Click 'ok' button to finish the adjustment.



Left click the 'TYPE' button on the interface, the screen on the right will appear, this function is used for the model selection.

This system offers four model to select: ACRO, HELI-90. HELI-120, HELI-140.

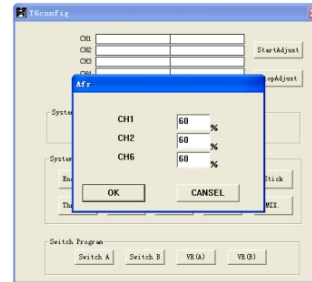
Click 'ok' button to finish the adjustment.



2. 4G 6 Channel remote system

Left click the 'ARF' button on the interface, the screen on the right will appear, this function is used for the swash plate adjustment of CCPM function helicopter CH1\CH2\CH4 are adjusted individually. Adjusted value from 0% to 100%. Number can be directly entered from the keyboard.

Click 'ok' button to finish the adjustment.



function is used for the programmable mixer function.

This system offers three individual mixed control function(MIX1/MIX2/MIX3)

Source: mixed control source select.

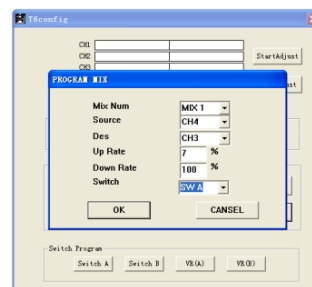
Des: destination select

Up rate: upper part's mixed control ratio (-100%to100%)

Down rate: lower part's mixed control ratio (-100%to100%)

Switch: Activation ways (OFF.ON.SWA.SWB)

Click 'ok' button to finish the adjustment.



13. 03 Switch and Potentiometers settings

This function selects what switches "A" & "B" control.

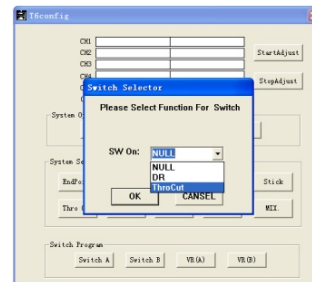
NULL = no control

DR = Use for Dual Rate (on/off)

NORID =

THRO CUT = Use for throttle override (CAUTION !!!)

Click 'ok' button to finish the adjustment.



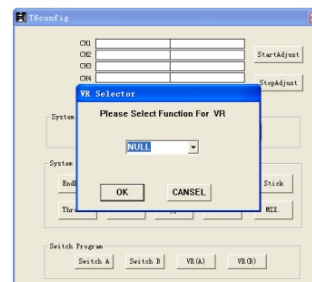
Left click the 'VR (A)' or 'VR (B)' button on the interface, the screen on the right will appear,

This function selects what the "A" & "B" Knobs will do.

NULL = Nothing

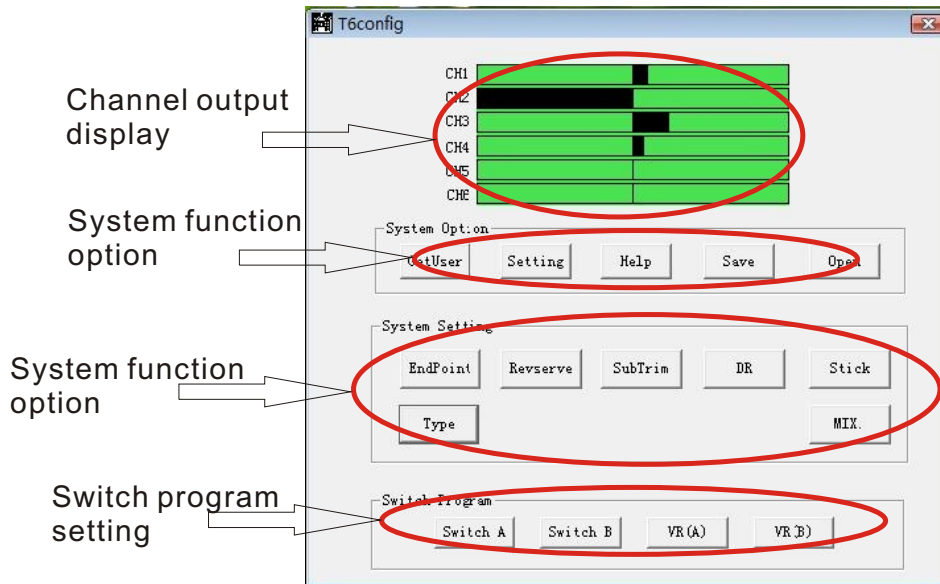
PITH = Pitch adjust

Click 'ok' button to finish the adjustment.



14. Transmitter function notes (Plane)

Connect the transmitter programming line with PC, switch on the transmitter and PC software. When you select Fixed-wing aircraft (ACRO), the following interface will appear:



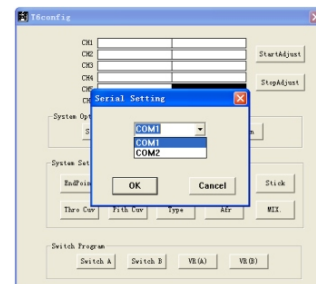
14. 01 System function option

GETUSER : Import the transmitter data to pc.

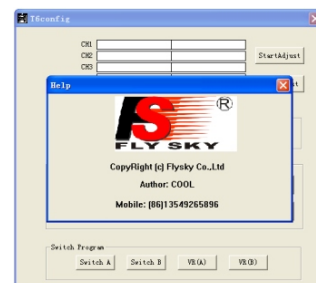
When programming, please use GETUSER button to transfer the data to PC this prevents data overwriting.

Left click the setting button to set the USB port number.

Press 'ok' button after finished



Left click the 'HELP' button for assistance



2. 4G 6 Channel remote system

Saving your model settings:

Left click the 'SAVE' button on the interface, the screen on the right will appear, this allows multiple files for models. You can give it a name, and left click the 'save' button to save.



Loading your model settings:

Left click the 'OPEN' button on the main interface, the screen on the right will appear, this system function is for the parameters setting.

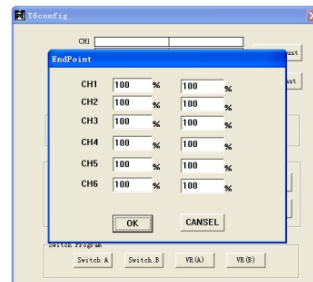
Left click the 'save' button when done.



13. 02 System function settings

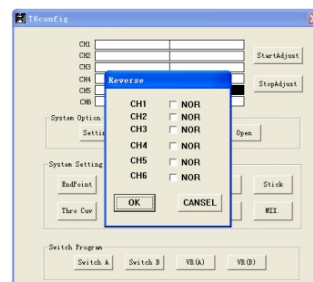
Left click the 'ENDPOINT' button on the interface, the screen on the right will appear, this is for setting travel limits.

Left click the 'ok' button to finish the adjustment.
Left click the 'cancel' button to restore.



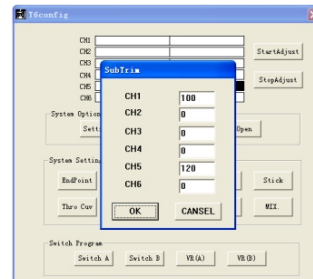
Left click the 'REVERSE' button on the interface, the screen on the right will appear, this function is used to reverse a servo.

Left click the channel you want to change.
Click 'ok' button to finish the adjustment.



Left click the 'SUBTRIM' button on the interface, the screen on the right will appear, this function is used to trim a single servo. Values can be between 0 and 120.

Click 'ok' button to finish the adjustment.

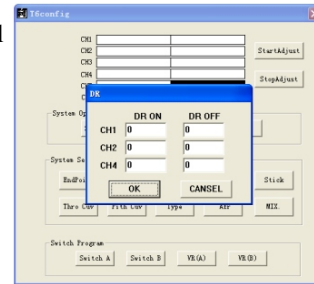


2. 4G 6 Channel remote system

Left click the 'DR' button on the interface, the screen on the right will appear, this function is use for dual rate control of CH1\CH2\CH4

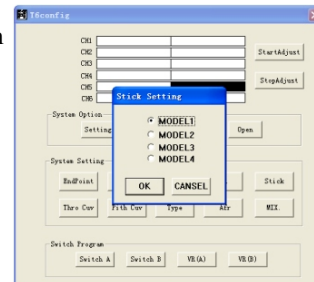
This function will only take effect when the 'DR' switch is on.

Click 'ok' button to finish the adjustment.



Left click the 'STICK SETTING' button on the interface, the screen on the right will appear, this function sets the "Mode".

Click 'ok' button to finish the adjustment.

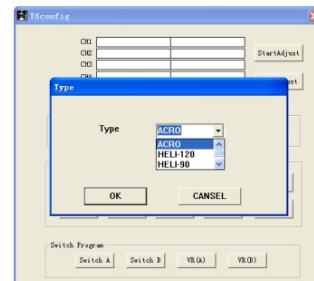


NOTE, this selection is done first when making a new model setup, but not done at all when editing an existing model's settings.

Left click the 'TYPE' button on the interface, the screen on the right will appear, this function is use for the model selection.

This system offers four model to select: ACRO, HELI-90. HELI-120, HELI-140.

Click 'ok' button to finish the adjustment.



15. Terms, English/Chinese

AIL: 副翼
ELE: 升降舵
THR: 油门
RUD: 方向舵
GEAR: pp dd (Not Chinese, but what do I know? -DBacon)
PITCH: 螺距
FM: 调频
PPM: 脉冲相位编码
PCM: 脉冲数据编码
MODULE: 调制
RF: 射频
DR: 双重比率
TRAINER: 教练
STICK: 操纵杆
NULL: 无功能
REV: 反向
NOR: 一般
TRIM: 微调
SUB. TRIM: 辅助微调
HELI: 直升机
ACRO: 飞机
VR: 电位器
SW: 开关
UP: 上
DOWN: 下
DES: 目标
SOURCE: 起源
IDEL: 特技

16. Package Contents:

NO :	Model	Sum	Remarks
1	6 channel 2. 4G transmitter (FS-CT6A)	1	
2	6 channel 2. 4G receiver (FS-CT6A)	1	
3	Match(code)line	1	
4	Programming line	1	Optional
5	PC software、CD	1	Optional
6	Charger	1	Optional
7	Server (FS-S036)	4	Optional
8	Transmitter (FS-CT6A)	1	

This is the disclaimer, in appropriate fine print that you can hardly read, another common English tradition.
 This hereby states that I won't be responsible for nuthin' involved in this translation, I probably screwed up in a number of places.
 And sometimes I can't spel to guud.
 Do not use this manual in the bathtub, or on a ladder, or while being chased by a rabid animal.

Copied right by D. Bacon, secretary of The Fly'n Wolverines RC club.



Http: www.flyskychina.com
Copy right 2007@flysky co. , ltd