

INSTRUCTION MANUAL

POWER SWITCH SK-600054

SKYRC

Thank you very much for your trust in the products of SKYRC. Please read this user manual carefully before using this product to avoid any problems in advance. Please also pay attention to the technical data and limits of this product.



INTRODUCTION

SKYRC introduces the POWER SWITCH, a tiny MCU controlled on/off switch for your radio controlled model. A simple push button operates the switch meaning to eliminate the problems associated with intermittent contact of an ordinary mechanical switch. The sealed unit is plastic and can easily be mounted to the transponder mount of your model or anywhere else you can mount it using double side tape. (Two kinds of bottom covers are included, user can change the bottom cover.)

The switch also features a LiPo mode, by turning this on the switch unit will auto detect low LiPo voltage and cut off power to protect your LiPo from over dis-charging. This of course can be turn off if you have other safeguards in place or using NiMH/NiCad battery.

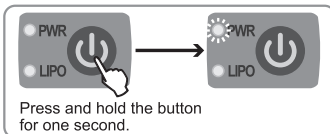
Beside that the power switch informs you about the remaining capacity and conditions of your battery pack.

SWITCH ON/OFF SETUP

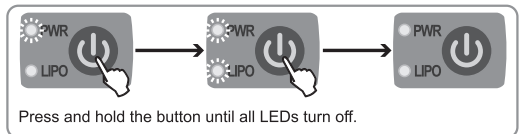
1. NiMH/NiCad Battery Pack

For switching on please press and hold the button for one second. The PWR LED will turn on. For switching off please press and hold the button until all LEDs turn off. The PWR LED also shows you the remaining battery capacity when switched on.

SWITCH ON



SWITCH OFF



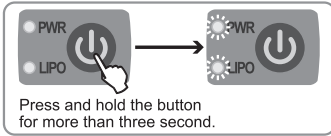
REMAINING BATTERY CAPACITY

	Green	80-100%
	Orange	60-79%
	Red	20-59%
	Red Blinking	<20%

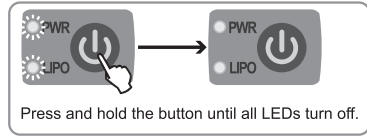
2. LiPo Battery Pack

For switching on please press and hold the button for more than three second. The PWR LED and LIPO LED will turn on. For switching off please press and hold the button until all LEDs turn off. The PWR LED also shows you the remaining battery capacity when switched on.

SWITCH ON



SWITCH OFF



REMAINING BATTERY CAPACITY

	Green	80-100%
	Orange	60-79%
	Red	20-59%
	Red Blinking	<20%

SPECIFICATIONS

Input Voltage: 4-12V

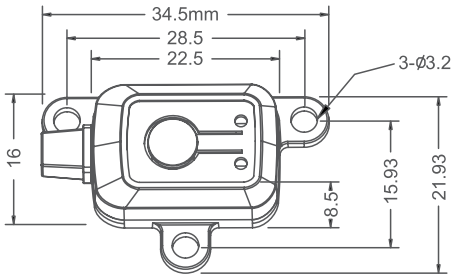
Max. Current: 10 Amp

Battery Mode: 1. NIMH / NiCad 2. LiPo

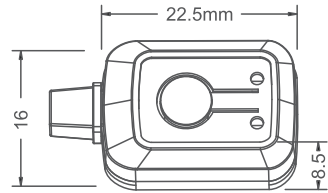
Low Voltage Protection: 6.2V(LiPo)

Operating temperature: 0-50°C

Weight: ≤ 7g



With Transponder Mount



Without Transponder Mount

WARRANTY AND SERVICE

We guarantee this product to be free of manufacturing and assembly defects for a period of one year from the time of purchase. The warranty only applies to material or operational defects, which are present at the time of purchase. During that period, we will repair or replace free of service charge for products deemed defective due to those causes.

You will be required to produce proof of purchase (invoice or receipt). This warranty is not valid for any damage or subsequent damage arising as a result of misuse, modification or as a result of failure to observe the procedures outlined in this manual.



Manufactured by
SKYRC TECHNOLOGY CO., LTD.
www.skyrc.com