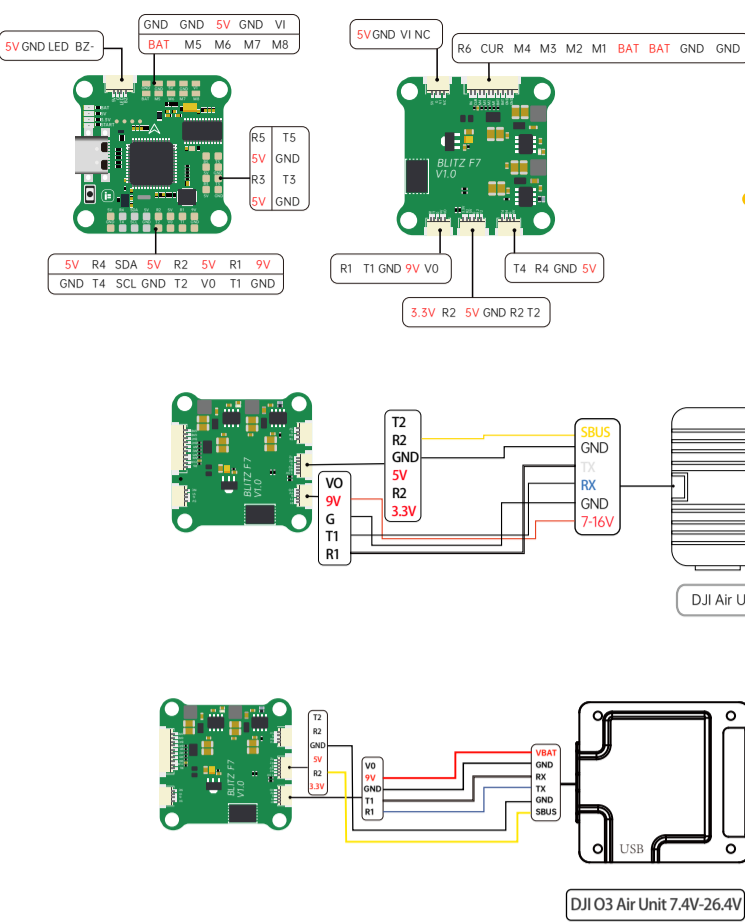
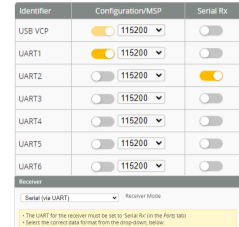


iFlight BLITZ F7 Wiring Diagram

DJI Digital VTX + Radio



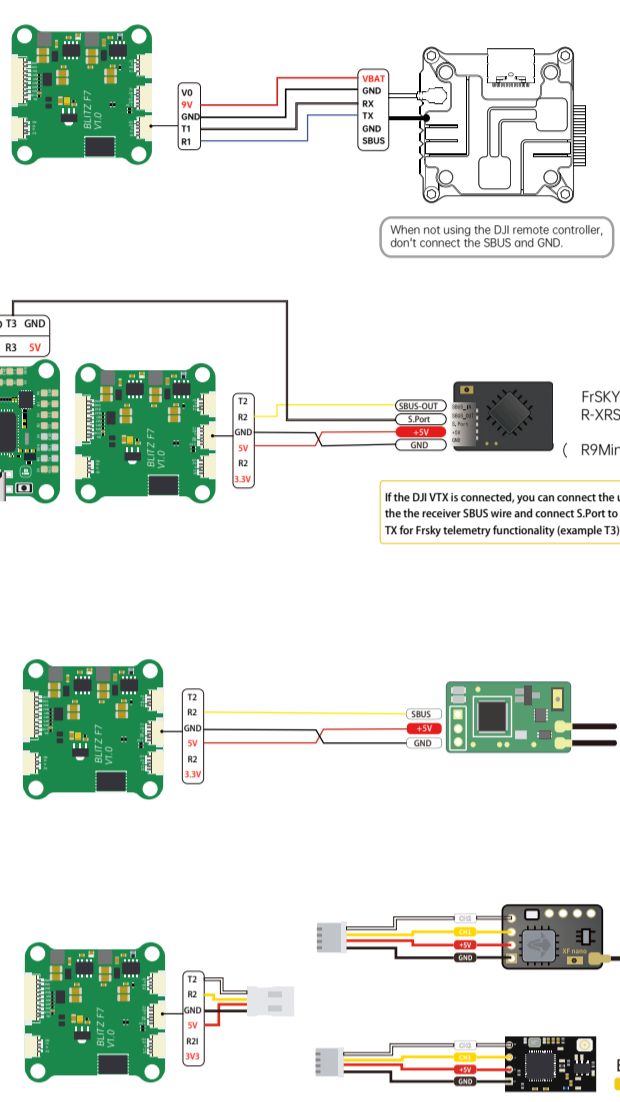
• Please check your protocols, otherwise your DJI Radio won't input signals!
 DJI Goggle protocol and Betaflight protocol has to match!
 For lower signal latency use the SBus_BAUD_FAST protocol option on both ends.
 For Betaflight Copy/Paste "set sbus_baud_fast=on" into your Betaflight Configurator CLI then hit enter.
 Use "save" and hit enter to save the changes.
 Default: sbus_baud_fast=off, Goggle protocol set to NORMAL



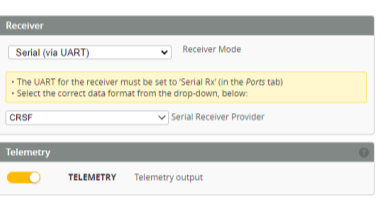
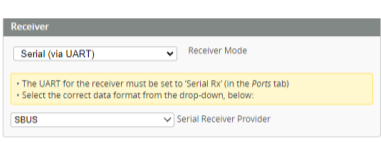
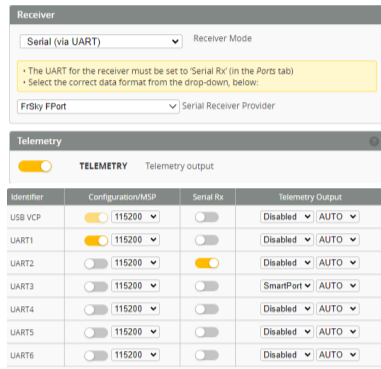
• The DJI Plug&Play connector has a VBAT passthrough! Please remember, the DJI Air Unit can just handle voltage up to 4S! To fly up to 6S batteries, please connect the 9V (Built-in BEC).

• For DJI O3 Air Unit, In to the Betaflight Configurator CLI, Set osd device to MSP: "set osd_displayport_device = MSP" Specify the serial port of msp as 0 (the number in this place should be the serial port number minus 1): "set displayport_msp_serial = 0" then type "save" and exit

Various Receivers

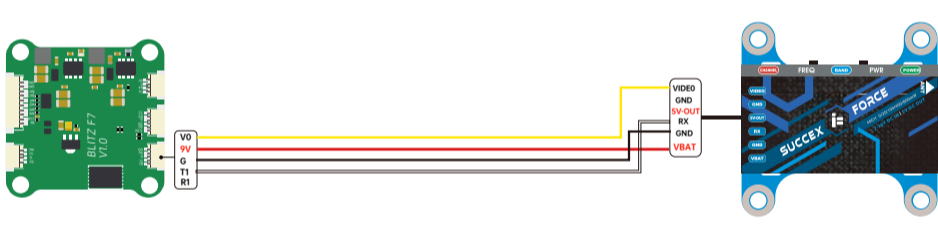


Identifier	Configuration/MSP	Serial Rx
USB VCP	115200	
UART1	115200	
UART2	115200	
UART3	115200	
UART4	115200	
UART5	115200	
UART6	115200	

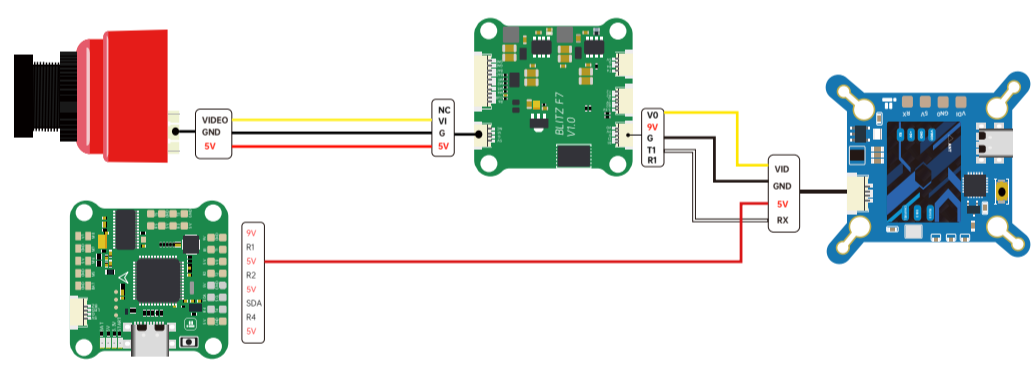


VTX/CAM

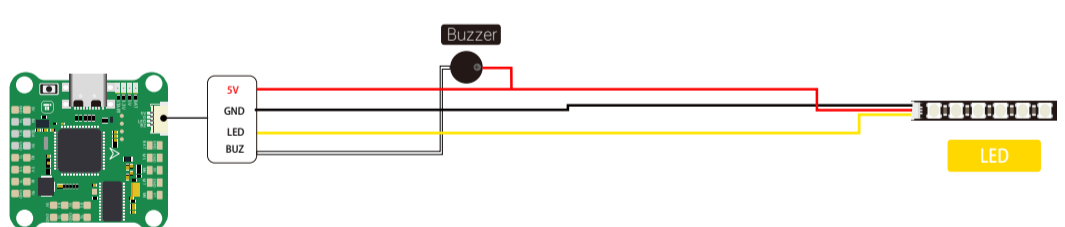
Identifier	Configuration/MSP	Serial Rx	Telemetry Output	Sensor Input	Peripherals
USB VCP	115200		Disabled / AUTO	Disabled / AUTO	VTX (IRC Trans) / AUTO
UART1	115200		Disabled / AUTO	Disabled / AUTO	Disabled / AUTO
UART2	115200		Disabled / AUTO	Disabled / AUTO	Disabled / AUTO
UART3	115200		Disabled / AUTO	Disabled / AUTO	Disabled / AUTO
UART4	115200		Disabled / AUTO	GPS / 57600	Disabled / AUTO
UART5	115200		Disabled / AUTO	Disabled / AUTO	Disabled / AUTO
UART6	115200		Disabled / AUTO	ESC / AUTO	Disabled / AUTO



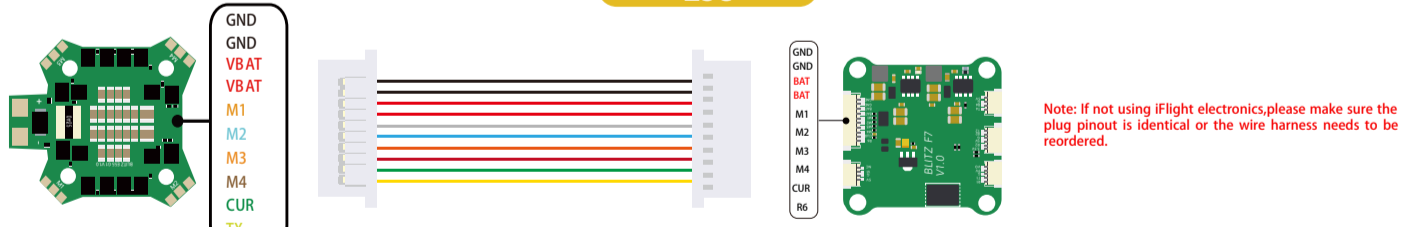
CAMERA



LED/Buzzer

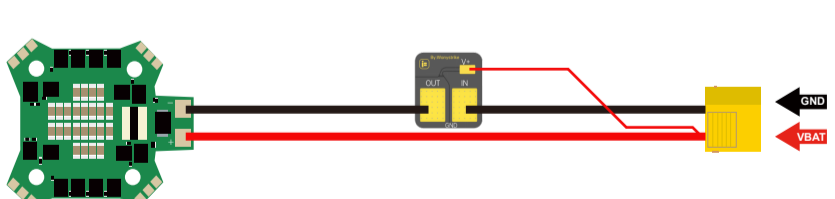


Esc

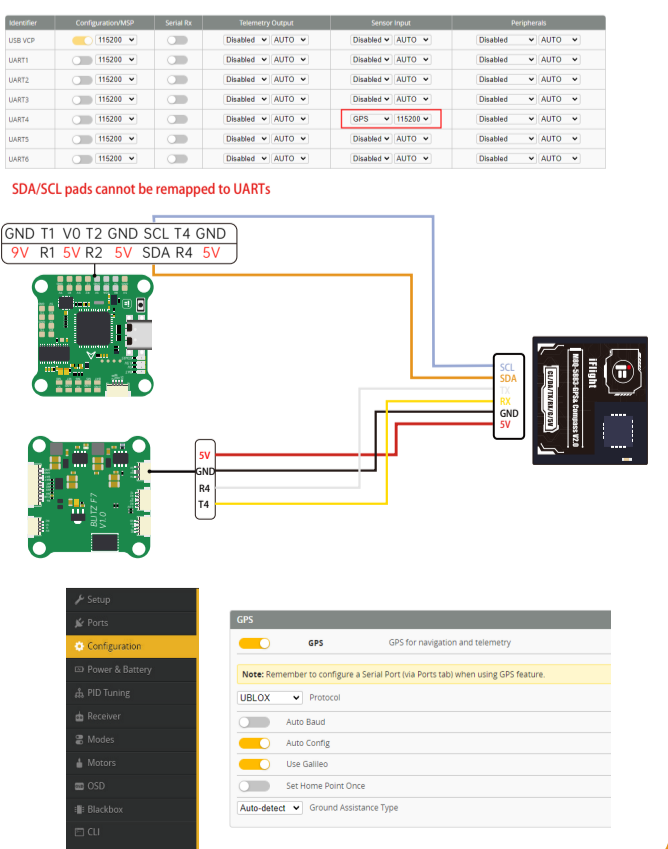


Note: If not using iFlight electronics, please make sure the plug pinout is identical or the wire harness needs to be reordered.

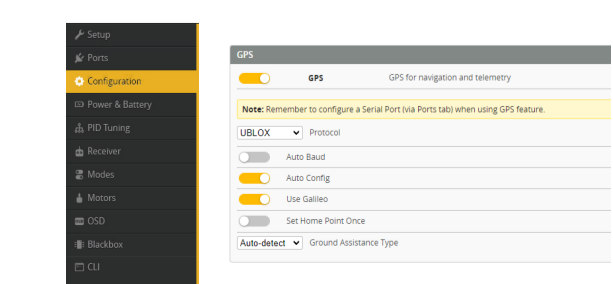
Anti-Spark filter



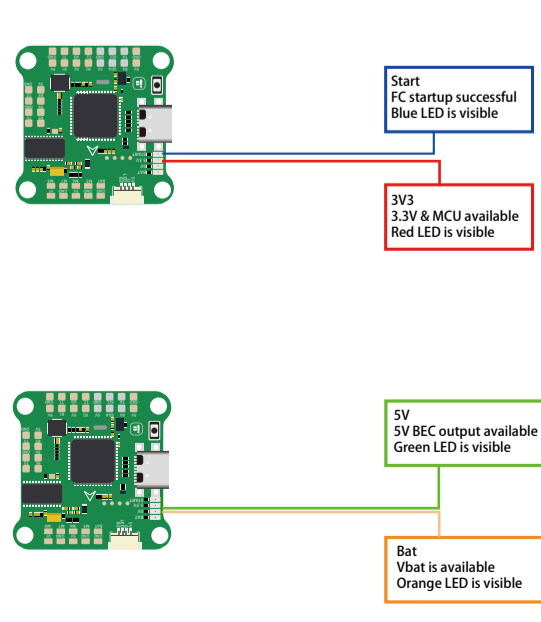
GPS



SDA/SCL pads cannot be remapped to UARTs



Status indicator



Note: Each LED indicates the status of your flight controller.